

TINGERPLAST



# UIQUE CELLAR TINGARD

10

years of successful work  
in rotomolding sphere

7000

sold cellars

100

representatives in  
Russia and other  
countries

150

crewmates in our  
company

**SAVE YOUR HARVEST**



## About company

TINGER companies group – Russian manufacturer, specialize on the developing and production of TINGER world brand snow-swamp-going vehicles and TINGERPLAST trade brand products made of polymer.


For the present time, the company has a strong position on Russia and develops the export projects on Great Britain, Czech, Slovakia, Sweden, Japan, Poland, Chili, Finland and Baltic countries territories.

TINGER companies group has its' own manufacturing base that is located in Vologda region, Cherepovets city. Full circle production line is organized at the factory, from the product design to the final assembling, including components wide range production in it.

TINGERPLAST company, part of TINGER companies group, specializes on polymer and composite materials production since 2007. The flagman product is TINGARD seamless plastic cellar that is protected by a patent, and firstly in the world made by innovation technology- rotomolding method. Advanced development allows to manufacture high-quality, reliable and long-lifetime plastic products.

# TINGARD seamless plastic cellar

TINGARD seamless plastic cellar – it is an innovation on the growing material marketplace for countryside life facilities construction.

Our solutions have conquered many followers not only in Russia, but far from the borders. For more than 10-years of TINGERPLAST experience, 7000 cellars have been produced. All the products have a Certificate of Compliance CE. 



Convenient manhole cover



Supply ventilation



Integral LED illumination



Reliable metal stair with wide wooden rungs



High capacity shelves for product storage



Exhaust ventilation



Strong metal carcass



Meteorological station



Strong seamless housing with wall thickness up to 15mm



Wooden floor



### Reliable

- Absolutely sealed
- Stand-strong to decay, corrosion, mold and condensation



### Environmentally safe

We use environmentally safe high-strength food grade polyethylene and dry board made of conifer



### Capacity

- 3 liter jar    x to 286 pcs
- Bags        x to 47 pcs
- Volume     x to 15 m<sup>3</sup>



### 5 Years of product warranty

Exploitation lifetime  
**over 100 years**



### Convenient exploitation

- No need for additional service
- Declined stair with wide wooden rungs
- Autonomous LED illumination
- Natural ventilation



### Mounting

- Ready for mounting and exploitation
- Work time 5-7 hours
- Possible to mount as on the open area, as well under the building, in any ground type



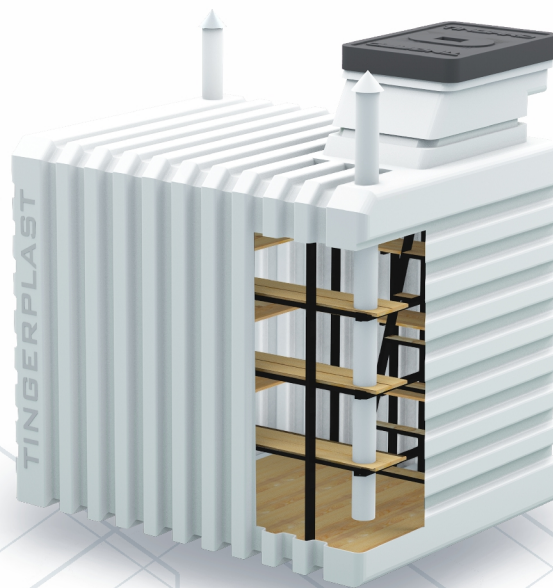
Produced of primary food grade polyethylene. It means that the cellar is absolutely safe for human's health. And even during long-time storage, products will not have any specific taste or smell. The cellar has no seams, reinforced by stiffening ribs and by metal carcass.

### Classic equipment:

- Manhole cover with hinges and lock
- Declined metal stair with convenient **wide** wooden steps
- Practical wooden shelves
- Carcass with polymer cover
- Autonomous LED illumination
- Meteorological station
- Supply and exhaust ventilation

### Additional options:

- Wine rack
- Mounting kit
- Cargo mini-elevator



# Cargo mini-elevator

CARGO MINI-ELEVATOR can be installed in all cellar models\*, it will ease cargo lift and descent operations, it has special importance for elder people, who often use the cellar.

Load capacity - 150 kg

Produced of galvanized metal and additionally covered by powder color. Represented in two color models: black and black-yellow.



\* - does not install on 1500 and cellar with side entrance

# TINGARD 3000

External overall dimensions L/W/H (mm) 2900x1900x2700

Manhole overall dimensions L/W/H (mm) 960x670x600

Wall thickness to 15 mm

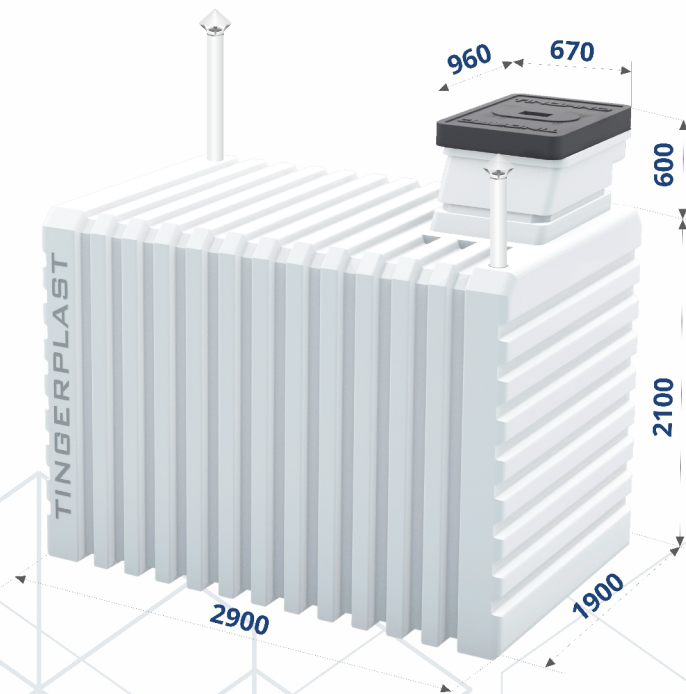
Weight 745 kg

Volume 15 m<sup>3</sup>

Sealing 100%

Material Food grade polyethylene

Exploitation lifetime Over 100 years



# TINGARD 2500

External overall dimensions L/W/H (mm) 2400x1900x2700

Manhole overall dimensions L/W/H (mm) 960x670x600

Wall thickness to 15 mm

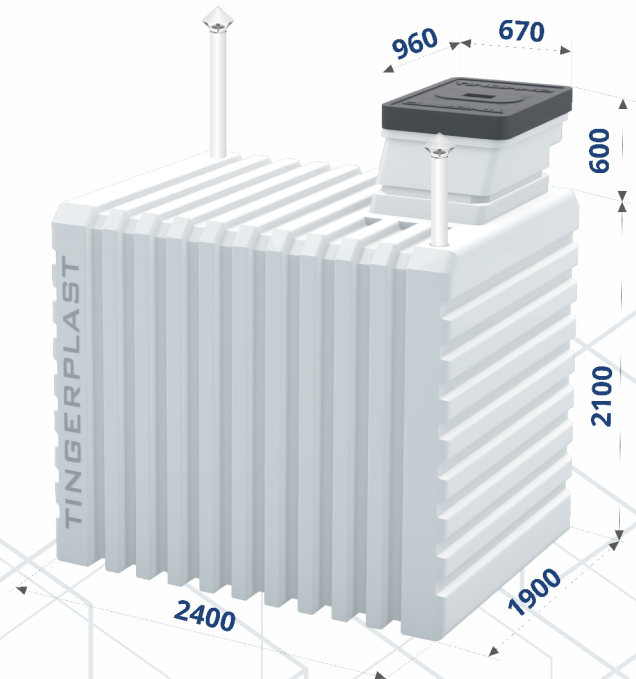
Weight 655 kg

Volume 10 m<sup>3</sup>

Sealing 100%

Material Food grade polyethylene

Exploitation lifetime Over 100 years





# TINGARD 1900

External overall dimensions L/W/H (mm) 1900x1900x2700

Manhole overall dimensions L/W/H (mm) 960x670x600

Wall thickness to 15 mm

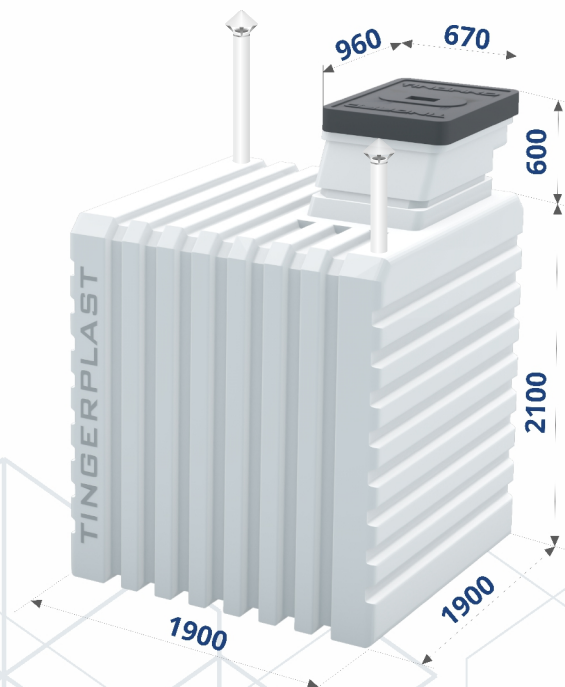
Weight 570 kg

Volume 7,5 m<sup>3</sup>

Sealing 100%

Material Food grade polyethylene

Exploitation lifetime Over 100 years



# TINGARD 1500

External overall dimensions L/W/H (mm) 1500x1500x2500

Manhole overall dimensions L/W/H (mm) 860x670x600

Wall thickness to 15 mm

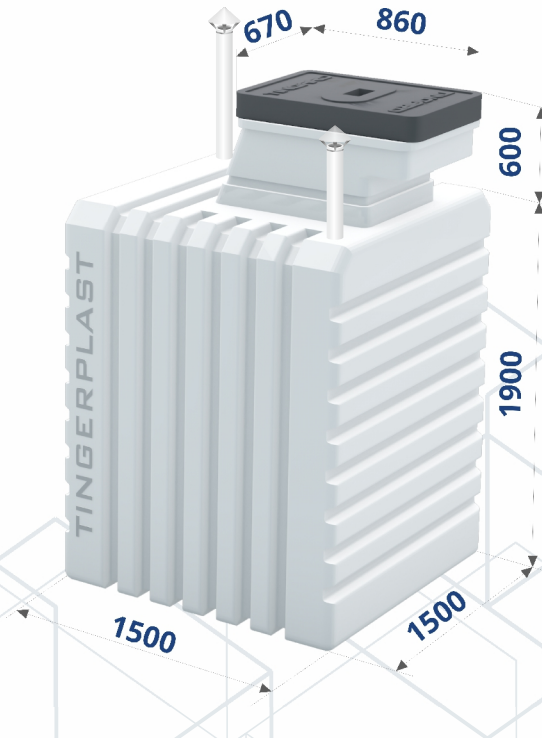
Weight 360 kg

Volume 4,5 m<sup>3</sup>

Sealing 100%

Material Food grade polyethylene

Exploitation lifetime Over 100 years



# TINGARD 1900-B

External overall dimensions L/W/H (mm) 2500x1900x2700

Manhole overall dimensions L/W (mm) 1015x755

Wall thickness to 15 mm

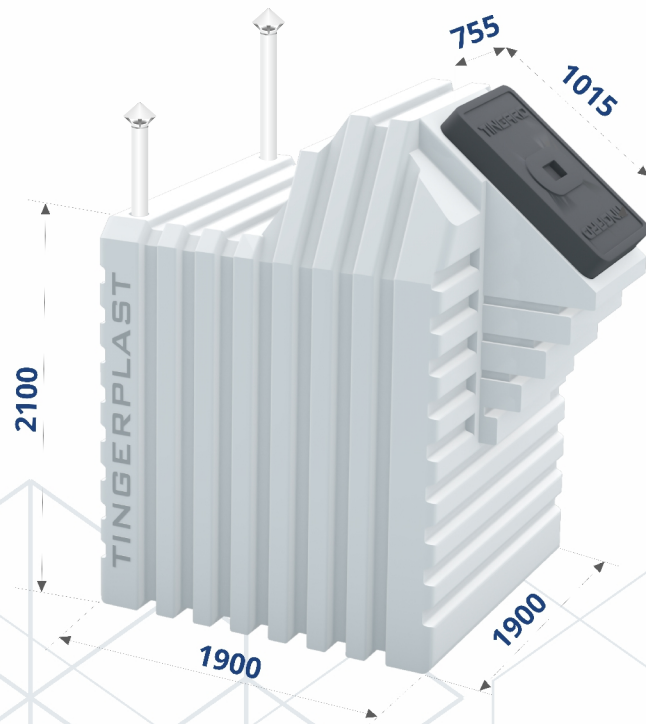
Weight 610 kg

Volume 8 m<sup>3</sup>

Sealing 100%

Material Food grade polyethylene

Exploitation lifetime Over 100 years

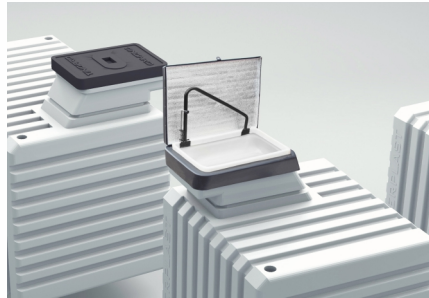


# TINGARD cellar

Metal carcass and convenient stair



Manhole cover and handrail



Supply-exhaust ventilation



Technological stiffening ribs



Wooden floor and 3 levels of shelves



Cargo mini-elevator\*

\* do not consist in standard equipment



# Mounting order:

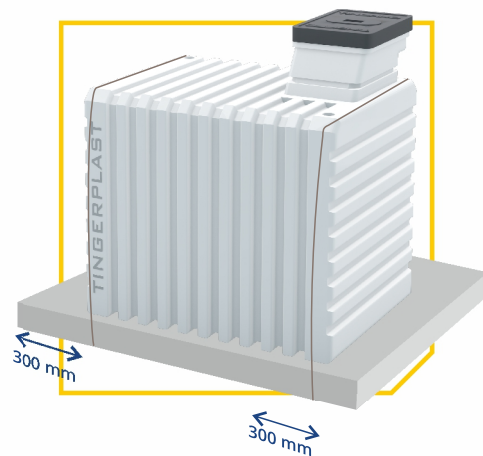
1 Rig the pit. Put the cables down on the bottom then put the concrete on. The cellar installs on the concrete plate.

2 Hitch the cables; produce reversed backfill with soil ramming. Attention! If there is clay presence, the reverse backfill is producing by sand with layer wise ramming.

3 The cellar upper part is insulated during penoplex plates backfilling (in case of the building presence above, insulation is not required) \*

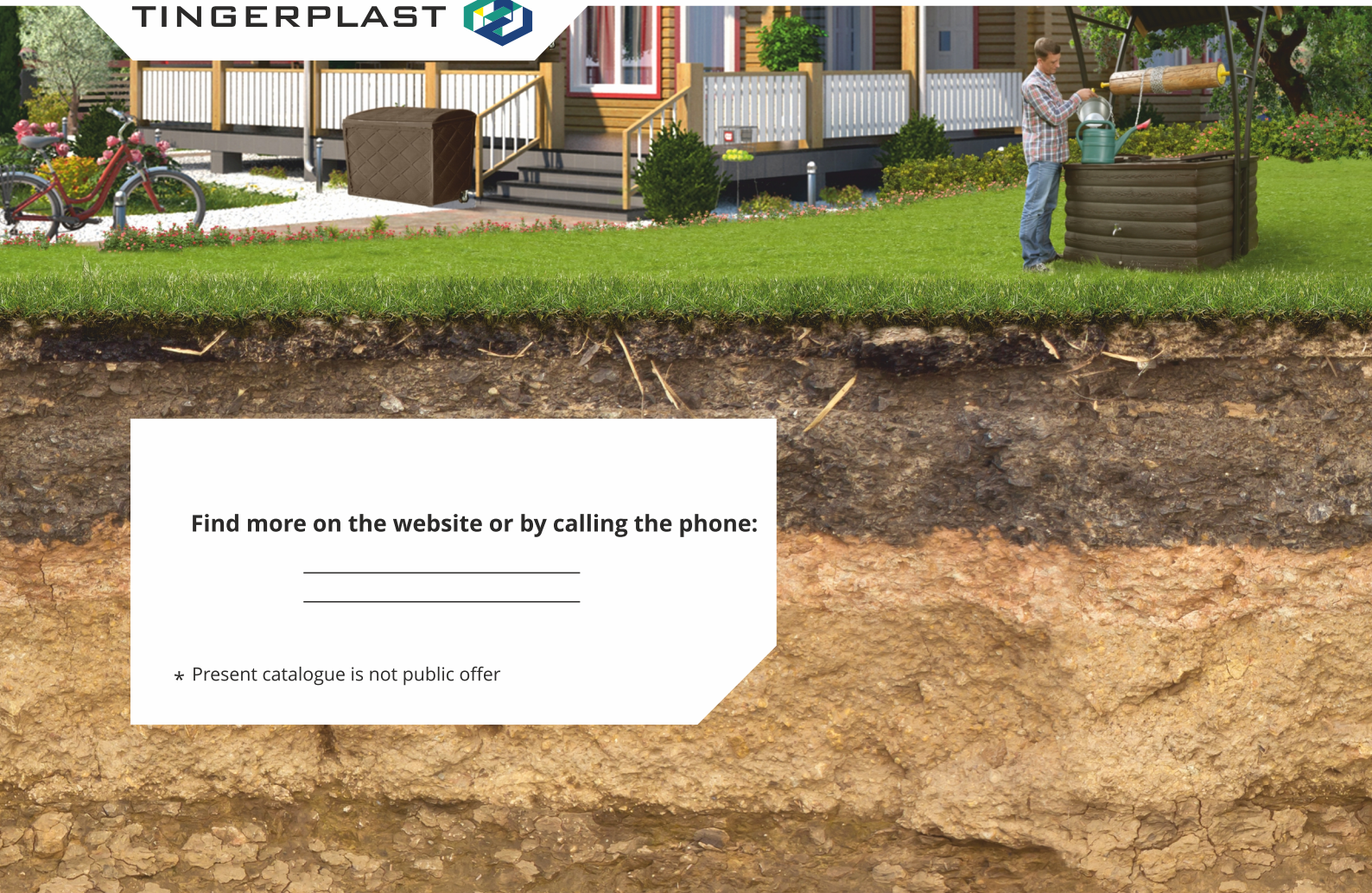
4 Stow back the taken out in advance soil.  
In case of under-building mounting (garage, house and etc.) with floor concrete, then cellar anchoring might be produced by the floor concrete. Such an installation is the cheapest one, but is possible only on the construction phase.

\* It is recommended to insulate cellar up to the freezing depth



Insulation operations depends of region

**TINGERPLAST**



**Find more on the website or by calling the phone:**

---

---

\* Present catalogue is not public offer